

NORTH KARELIAN BIRDING AREAS

Bird towers

1. Kitee, Hovinlampi (2 towers)
2. Joensuu, Höytiäinen channel estuary
3. Rääkkylä, Jouhtenuslampi
4. Valtimo, Lake Kalliojärvi (2 towers)
5. Rääkkylä, Lake Kiesjärvi
6. Outokumpu, Laikanlahti Bay
7. Lieksa, Patvinsuo
8. Tohmajärvi, Peijonniemenlahti bay
9. Kontiolahti, Pitkäranta
10. Kitee, Päätyeenlahti bay (2 towers)
11. Rääkkylä, Ruokosalmi
12. Kontiolahti, Satamalahti
13. Polvijärvi, Solanlampi
14. Nurmes, Lake Suojärvi
15. Kontiolahti, Lake Suopolinjärvi
16. Outokumpu, Lake Sysmäjärvi (2 towers)
17. Liperi, Lake Särkijärvi
18. Värtsilä, Lake Sääperi

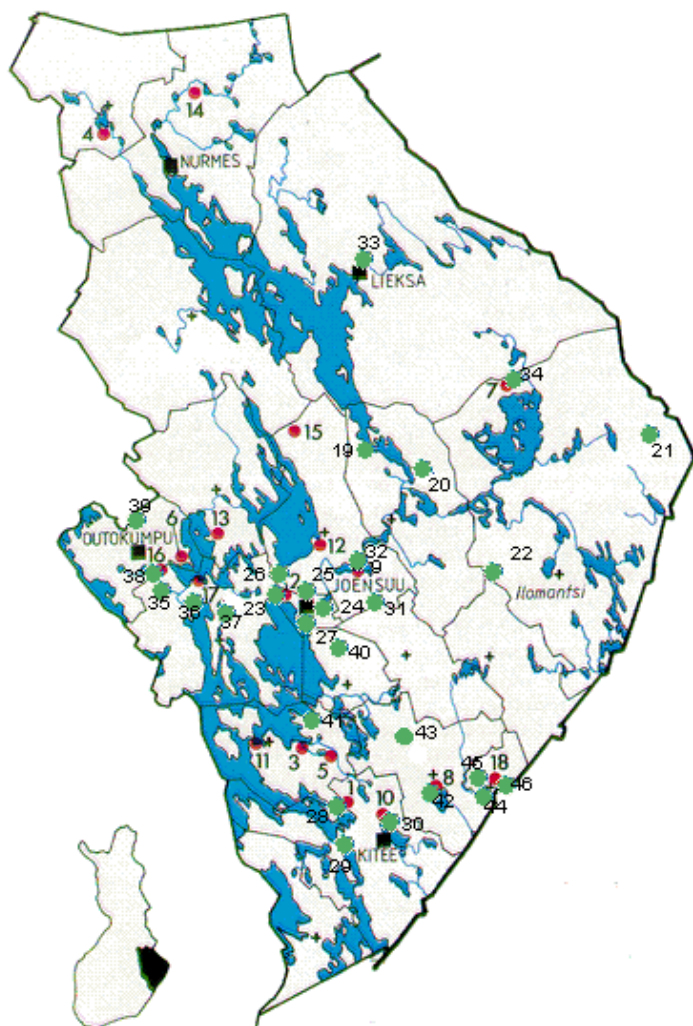
Birding areas

19. Eno Ahveninen
20. Eno Uimaharju
21. Ilomantsi Koivusuo
22. Ilomantsi Sonkajanranta altaat
23. Joensuu Höytiäinen channel estuary
24. Joensuu, Kontiosuo dump site
25. Joensuu Linnunlahti
26. Joensuu Marjala
27. Joensuu Ukonlahti
28. Kitee Hovinlampi
- Kitee, Muljula
29. Kitee Puhos fields
30. Kitee Päätyeenlahti Bay
31. Kontiolahti Iksenniitty fields
32. Kontiolahti Pitkäranta
33. Lieksa Kevätlahti Bay
34. Lieksa Patvinsuo National Park
- Lieksa, Reposuo
35. Liperi Ahonkylä fields
36. Liperi Heponiemenlahti Bay
37. Liperi Mattisenlahti Bay
38. Outokumpu Lake Sysmäjärvi
39. Outokumpu Vuonos
40. Pyhäselkä Mulo

- 41. Rääkkylä Vuoniemi Spit
- 42. Tohmajärvi Peijonniemenlahti Bay
- 43. Tohmajärvi Valkeasuo
- 44. Värtsilä Niirala
- 45. Värtsilä Uudenkylänlampi
- 46. Värtsilä Lake Sääperi

On the map

=Bird tower, =Birding area.



7

North Karelian Birding Areas

Here are some of the most interesting birding areas in North Karelia with driving directions and short lists of rare species seen. The best way of finding these is to use Finnish Road Maps GT-6 and GT-9.

19. Eno Ahveninen

From Joensuu north to Kajaani (highway 6) 14 km, right to Eno and Lieksa (road 73) 16 km, left to Ahveninen and Lieksa (road 518) 15 km. In winter open water on both sides of a high bridge. White-billed/Great Northern Diver, Little Grebe, Bufflehead, Glaucous Gull, Kingfisher.

20. Eno Uimaharju

From Joensuu north to Kajaani (highway 6) 14 km, right to Eno and Lieksa (road 73) 30 km to Uimaharju. In winter open water on the right side of a bridge, to the left industrial area (permit required). Glaucous Gull, Kittiwake, Hoopoe, Black Redstart, Serin.

21. Ilomantsi Koivusuo

From Ilomantsi north-east to Hattuvaara (road 522) 28 km, through the Hattuvaara village north (road 522) 5 km, right to a gravel road (sign Hoikka) 5 km. Koivusuo Nature Park on the south side of the road. Strict nature reserve, walking only on the roads and marked paths. Open bogs and old growth forest. Black Kite, Red-footed Falcon, Red-flanked Bluetail, Siberian Jay, Rustic Bunting. IBA-kohde

22. Ilomantsi Sonkajanrannan altaat

23. Joensuu Höytiäisen kanavan Suisto

From Joensuu west to Kuopio (road 17) 4 km, right and over the highway to Noljakka, south along Noljakantie 1300 m, right to Nuottaniementie (sign Lintutorni) 1 km, follow Lintutorni-signs along gravel roads to a parking plot, from there wooden causeways to a birdwatching tower. Birch forest, flood meadows, reed beds and open sand. There is a bird ringing station in the area (Höytiäinen Bird Observatory), access only with a permit. White-billed Diver, Great White Egret, Black Stork, Steller's Eider, Pallid Harrier, Spotted Eagle, Red-footed Falcon, Baillon's Crake, Allen's Gallinule, Pacific Golden Plover, Baird's Sandpiper, Marsh Sandpiper, Terek Sandpiper, Richard's Pipit, Citrine Wagtail, Lanceolated Warbler, Paddyfield Warbler, Great Reed Warbler, Booted Warbler, Barred Warbler, Yellow-browed Warbler, Pallas's Warbler, Woodchat Shrike, Yellow-breasted Bunting, Little Bunting.

24. Joensuu Kontiosuon dump site

From Joensuu south to Lappeenranta (highway 6) 1 km, right and over the highway to Ilomantsi (road 74) 200 m, right to the dump site (Jäteasema) 1 km. Open weekdays 7 am. - 20 pm, Saturday 7 am. - 14 pm, Sunday closed. Show your binoculars at the gate. Buff-breasted Sandpiper, Siberian Gull, Snowy Owl, Calandra Lark, Citrine Wagtail, Siberian Stonechat.

25. Joensuu Linnunlahti

In Joensuu by Lake Pyhäselkä, north of the estuary of Pielisjoki River, beside the camping site. Open areas by the lake, boat harbour, horse track, festival arena. Steller's Eider, King Eider, Great Snipe, Avocet, Pacific Golden Plover, Black Lark, Richard's Pipit, Siberian Stonechat.

26. Joensuu Marjala

27. Joensuu Ukonlahti

28. Kitee Hovinlampi

Kitee, Muljula

At Tolosenmäki junction in Kitee from highway 6 north-west to Rääkkylä (road 482) 7 km. On the right parking plot and short path to a birdwatching tower. A lush lake with extensive reed beds. Bittern, Red-footed Falcon, Little Crake, Great Reed Warbler.

29. Kitee Puhoksen pellot

Junction of highway 6 and road 71 in Kitee. Broad fields on the eastern side of highway 6. Pallid Harrier, Red-footed Falcon, Saker, Little Bustard, Snowy Owl.

30. Kitee Päätyeenlahti Bay

At Tolosenmäki junction in Kitee from highway 6 east to Kitee (road 488) 4 km, left to Haarajärvi (sign Lintutorni) 2 km, right to a gravel road (sign Lintutorni) 1 km, on the right parking plot and birdwatching tower. North end of a lush bay, can be seen also from a bridge at the south end of the bay (road 486). Red Kite, Little Crake, White-winged Black Tern, Black Tern. IBA-kohde

31. Kontiolahti Iksenniitty fields

From Joensuu south to Lappeenranta (highway 6) 1 km, right and over the highway to Ilomantsi (road 74) 3 km, right to a gravel road to Iksenniitty, the road circles through farming area and returns to road 74. Fulmar, Isabelline Wheatear, Lanceolated and Booted Warbler, Yellow-breasted Bunting.

32. Kontiolahti Pitkäranta

From Joensuu south to Lappeenranta (highway 6) 1 km, right and over the highway to Ilomantsi (road 74) 6 km, left to Kulho 3 km, through the traffic circle, after the village right to a gravel road (sign Lintutorni) 7 km ignoring side roads until on the left a small parking plot with information tables and a path to a birdwatching tower. Broad open bog by a river. Willow Grouse, Spotted Eagle, Lesser Spotted Eagle, White-tailed Eagle, Red-footed Falcon, Black-winged Pratincole, Marsh Sandpiper, Little Bunting, IBA-kohde

33. Lieksa Kevätlahti Bay

In Lieksa by Lake Pielinen north of the Lieksanjoki River estuary, go along the north side of the river under the highway to Kaupunginniemi harbour. To the north Kevätlahti Bay and in front the estuary. Marsh Sandpiper, Terek Sandpiper, Sandwich Tern, Siberian Stonechat.

34. Lieksa Patvinsuo National Park

From Joensuu north to Kajaani (highway 6) 14 km, right to Eno (road 73) 30 km, in Uimaharju through the traffic circle northeast (road 5160) 15,5 km, right to Inari (road 5202) 20 km, signs to Patvinsuo National Park. Largest wilderness area in Southern Finland, vast areas of open bogs and old growth forest. Golden Eagle, Black Kite, Red-footed Falcon, Willow Grouse, Capercaillie, Jacksnipe. Autiovaara nature track on the left 1 km before turning to national park: Hazel Hen, Three-toed Woodpecker, Black Woodpecker, Red-flanked Bluetail, Red-breasted Flycatcher, Rustic Bunting. IBA-kohde

Lieksa, Reposuo

From Lieksa east to Ilomantsi (road 522) 7 km, left to Ruunaa (road 5224) 4 km, on the left parking plot and wooden causeways to a birdwatching tower, wooden causeways also around the bog. Open wet bog. Osprey, Willow Grouse, Jacksnipe, Rustic Bunting.

35. Liperi Ahonkylä fields

From Joensuu west to Kuopio (road 17) 30 km, 500 m after the railroad left to a gravel road to

Ristonkangas 500 m, broad fields on both sides of a small river. Especially in spring (April-May) hundreds of resting ducks and waders. Pink-footed Goose, Pallid Harrier, Montague's Harrier, Buff-breasted Sandpiper.

36. Liperi Heponiemenlahti Bay

From Joensuu west to Kuopio (road 17) 23 km, south to Varkaus (road 23) 2 km, after a bridge a parking plot, in front estuary of a river. In spring resting ducks and waders. Citrine Wagtail.

37. Liperi Mattisenlahti Bay

From Joensuu west to Kuopio (road 17) 12 km, left to Liperi (road 476) 100 m and from the traffic circle left to Ylämylly 200 m and right to Mattisenlahti 2 km, left to a gravel road. Bay with extensive reed beds on the left. Thrush Nightingale, Savi's Warbler, Bearded Tit, Yellow-breasted Bunting.

38. Outokumpu Lake Sysmäjärvi

From Joensuu west to Kuopio (road 17) 37 km, pass junction of the road 573 200 m, left to a gravel road (sign Lintutorni) 200m. Very rich lake with open water and reed beds. Bittern, Black Stork, Long-legged Buzzard, Red-footed Falcon, Marsh Sandpiper, Terek Sandpiper, Great Reed Warbler, Bearded Tit, Yellow-breasted Bunting. IBA-kohde

39. Outokumpu Vuonos

From Joensuu west to Kuopio (road 17) 37 km, right to ?? (road 573) 4 km, right to Polvijärvi (road 504) 2,5 km, left to Talkkitie (stone sign 'Vuonoksen teollisuusalue') 1 km, after the railroad left and up to a bank circling a pool area. Area of mine waste: open sand, pools and wetlands. Ruddy Shelduck, Avocet, Marsh Sandpiper, Terek Sandpiper, White-winged Black Tern, Citrine Wagtail.

40. Pyhäselkä Mulo From Joensuu south to Lappeenranta (highway 6) 8 km, right to Reijola 50 m, left to Reijolantie which after 100 m turns right, through an area of single-family houses and left to Aaltosentie and over the railroad. In front field areas and further on lakeshore with reed beds. Pacific Golden Plover, Short-toed Lark, Siberian Stonechat, Yellow-breasted Bunting.

41. Rääkkylä Vuoniemi Spit

From Joensuu south to Lappeenranta (highway 6) 15 km, right to Hammaslahti (road 4846) 5,5 km, in Hammaslahti village right to Rääkkylä (road 484) 10 km, a gravel road right to Vuoniemi (opposite of Kitsi) 5,5 km to the head of the spit where a birdwatching tower. A place for visible migration in April-May and September-October, land birds follow the ridge and waterbirds and waders the lake. Great Northern Diver, Gannet, King Eider, Kittiwake, Little Auk, White-backed Woodpecker, Three-toed Woodpecker, Pallas's Warbler, Siberian Tit.

In 2002 North Karelian Ornithological Society build into Vuoniemi a Tower of Eihvel!

42. Tohmajärvi Peijonniemenlahti Bay

At Onkamo junction in Tohmajärvi from highway 6 east to Tohmajärvi (road 70) 15 km, through the village and traffic circle, after a steep downhill right to Ristee 1 km, from t-junction left to Ristee 1,5 km, after the Frontier Guard base a gravel road left (sign Lintutorni) to a parking plot and a birdwatching tower. Rich bay of Lake Tohmajärvi. American Wigeon, White-tailed Eagle, Red-footed Falcon, Red-rumped Swallow, Azure Tit.

43. Tohmajärvi Valkeasuo

At Onkamo junction in Tohmajärvi from highway 6 east to Tohmajärvi (road 70) 1,7 km, left to

gravel road (sign 'Valkeasuo-Emolehmänavetta') 6 km to a yard with heavy machinery, through the yard to the right through a gate (remember to close). Open fields with cattle, do not leave the roads. In April-May resting swans, geese and ducks, in August-October geese and Common Cranes. Pink-footed Goose, Lesser White-fronted Goose, Shelduck, Short-toed Lark.

44. Värtsilä Niirala

At Onkamo junction in Tohmajärvi from highway 6 east to Tohmajärvi and Värtsilä (road 70) 32 km, in Niirala before frontier crossing point left to Värtsilä (road 500) 1,5 km. Fields on the east side of the road, beyond the fields Russia. Little Grebe, Lesser White-fronted Goose, Pallid Harrier, Citrine Wagtail.

45. Värtsilä Uudenkylänlampi

At Onkamo junction in Tohmajärvi from highway 6 east to Tohmajärvi and Värtsilä (road 70) 32 km, in Niirala before frontier crossing point left to Värtsilä (road 500) 3,5 km, after Jänisjoki River left to a gravel road 300 m where a small plot for the car, on foot onwards through bushes 100 m and over a dam, to the right shallow pond covered with reed. White Stork, Pallid Harrier, Red-footed Falcon, Lanceolated Warbler, Azure Tit.

46. Värtsilä Lake Sääperi

At Onkamo junction in Tohmajärvi from highway 6 east to Tohmajärvi and Värtsilä (road 70) 32 km, in Niirala before frontier crossing point left to Värtsilä (road 500) 5 km and through the village until on the right a small parking plot and sign 'Lintutorni'. A rich shallow lake with flood meadows and reedbeds surrounded by fields. The farming areas around the lake hold the strongest population of Corncrake in Finland and rare eastern warblers like River, Lanceolated, Blyth's Reed, Icterine and Booted Warbler occur here regularly. In all Lake Sääperi and its surroundings is one of the bestknown birdareas in Finland with over 250 species recorded including Great White Egret, Black Stork, Lesser White-fronted Goose, Red-breasted Goose, Blue-winged Teal, Black and Red Kite, Egyptian Vulture, Pallid Harrier, Spotted, Lesser Spotted and Steppe Eagle, Red-footed Falcon, Demoiselle Crane, Marsh Sandpiper, Short-toed Lark, Richard's Pipit, Citrine Wagtail, Siberian Stonechat, Isabelline Wheatear, Lesser Grey Shrike, Yellow-breasted Bunting. IBA-kohde

Source: Pentti Zetterberg, 2001: *Ajo-ohjeet Suomen lintupaikoille (Pohjois-Karjala)*, Bongariliitto, julkaisematon